

Ministerial Decree

No. (230/2005)

Amending Some of the Terms of the Ministerial Decree No. (194/2001) on Determination of A'Sharqiyah Region Water Supply Wellfield Protection Zones

- Pursuant to the Law for Protection of Water Resources issued by Royal Decree No. (29/2000)
- And the Law for Protection of Water Resources from pollution issued by Royal Decree No. (115/2001)
- And the Ministerial Decree No. (194/2001) on Determination of A'Sharqiyah Region Water Supply Wellfield Protection Zones
- And to the General Public best of interest,

DECIDED

Article 1: Water Supply Wellfield Protection Zones in Wilayat of Al Kamel Wa Al Wafi, Jalan Bani Bu Ali and Jalan Bani Bu Hasan in A'Sharqiyah Region shall be added to Protection Regions mentioned in Article 1 of the mentioned Ministerial Decree No. (194/2001) in accordance to the plans and coordinates set out in the attached Appendixes.

Article 2: This Decree shall be published in the Official Gazette and shall be effective from the date of publication.

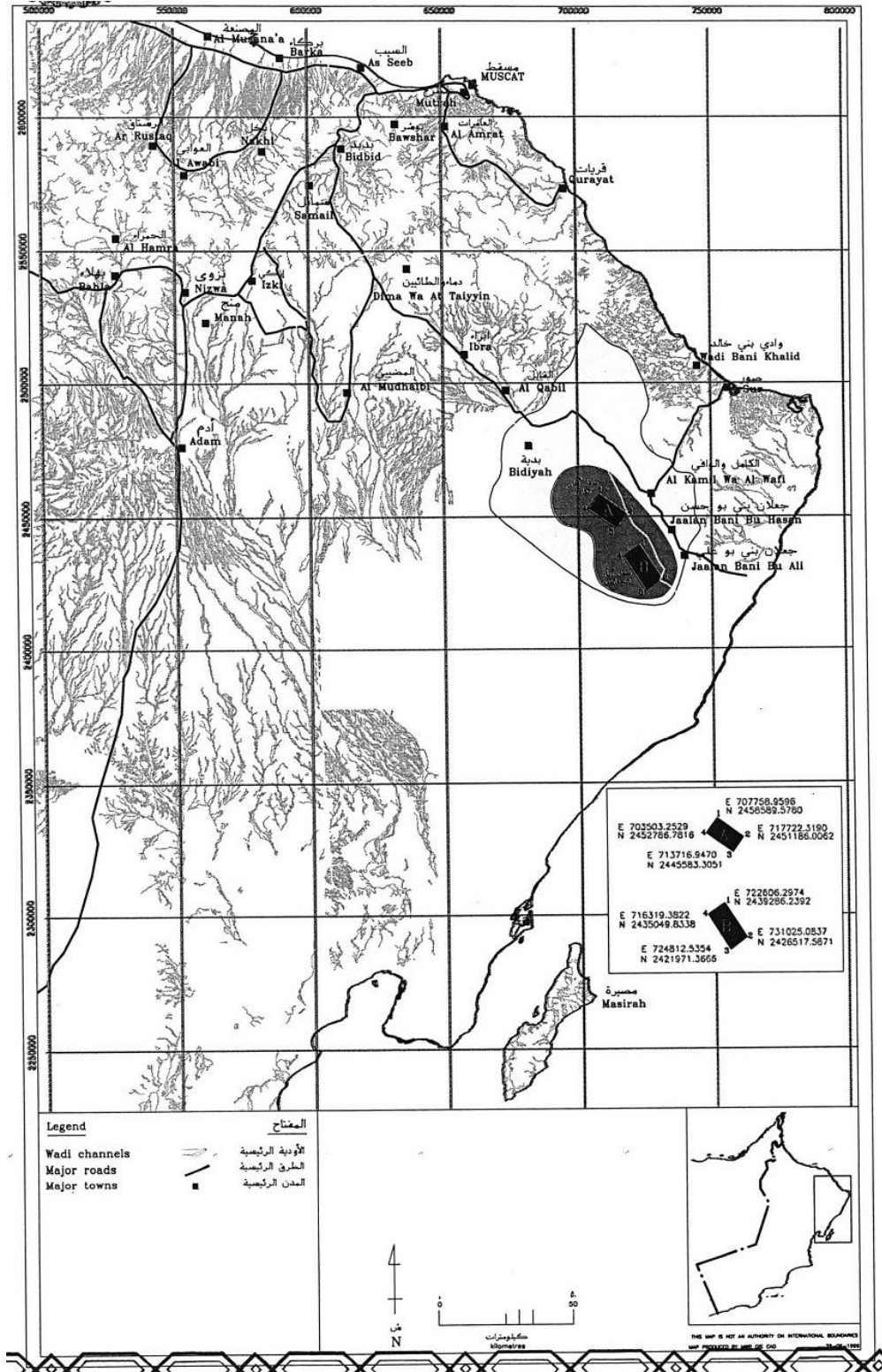
Issued on 20/08/1426H Correspondent to 24/ 09/ 2005

Dr. Khamis Bin Mubarak Bin Essa Al-Alawi

Minister of Regional Municipalities, Environment and Water Resources

APPENDIX (1)

Maps for the Water Supply Wellfields Protection Zones in A'Sharqiyah Region



PENDIX (2)

Coordinates for the Water Supply Wellfields Protection Zones in A'Sharqiyah Region

Wilayat of Al Kamel Wa Al Wafi Water Supply Wellfield Protection Zones

Wilayat	Water Collection Area	Red Zone	Orange Zone		Yellow Zone	
Al Kamel Wa Al Wafi	Wadi Albatha	Flood plain of Wadi Albatha including Al Kamel Wa Al Wafi Water Supply Wellfield. Its coordinates are:	Surrounds the red zone. Its coordinates are:		The rest of the water collection area.	
		North	East	North		East

PENDIX (2)

Coordinates for the Water Supply Wellfields Protection Zones in A'Sharqiyah Region

Jalan Bani Bu Ali and Jalan Bani Bu Hasan Water Supply Wellfield Protection Zones

Wilayat	Water Collection Area	Red Zone	Orange Zone		Yellow Zone	
Jalan Bani Bu Ali and Jalan Bani Bu Hasan	Wadi Albatha	Flood plain of Wadi Albatha including Jalan Bani Bu Ali and Jalan Bani Bu Hasan Water Supply Wellfield. Its coordinates are:	Surrounds the red zone. Its coordinates are:		The rest of the water collection area.	
		North	East	North		East